



European Policies related to River Basin Planning and Management

Watersketch mid-term workshop
Harburg 2. November 2005

08.11.2005

Pia Frederiksen, NERI

1



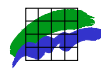
“Clearly, for effective water management, it is essential for activities that impact the water environment, but that fall within the competence of other sectors, to be coordinated with the objectives of water management and protection. Failure to take such a holistic approach to water management is recognised as one of the main deficiencies of the existing aquatic legislative framework and has contributed to its inadequate implementation across Europe.”

(CIS Guidance Document 11, The Planning Process)

08.11.2005

Pia Frederiksen, NERI

2



Overall Watersketch aims

The main aims of the project are to prepare a strategy via which **challenges seen in river basin planning** in the Baltic Sea region may be addressed by

- Analyzing and synthesizing the different directives and conventions focused on use of watercourses.
- Evaluating, how the goals of the regulations are expressed at the regional scale land use planning (especially related to WFD)

Today I will focus on three questions:

- How does the WFD relate to other European policies,
- How is policy integration (and other integration) ensured and
- How is this related to aspects of spatial planning

08.11.2005

Pia Frederiksen, NERI

3



Content:

- Concepts of Integration
- WFD - an ecosystem oriented approach to integrated planning and management
- WFD: integrative approaches and implementation method
- European policies interacting with this approach
- Structuring policies
- Summarising integrative aspects
- Implementation in national planning context
- Conclusions

08.11.2005

Pia Frederiksen, NERI

4



Integration



- Conceptualisation of “Integration”

- Integration of environmental concerns into governance
- Integration across environmental media (land, water, air)
- Integration of the environment, economy and society
- Integration of stakeholders into governance
- Integration across policy domains (DPSIR)
- Vertically integrated planning and management (territory and institutions)

What is the integration perspective in the WFD approach?

08.11.2005

Pia Frederiksen, NERI

5



EU Water Policy



1975: Policy on quality of surface water intended for drinking water
- Followed by a large number of directives aiming at protecting the water condition and public health.

Three (overlapping) phases may be identified:

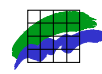
- 1) Improved water quality in Europe (~1975-1980)
- 2) Emission limit value approach (~1988-1998)
- 3) Integration and harmonisation of water policy ~(1995-2000)

WFD came into force 22. December 2000, representing an ecosystem oriented approach to integrated planning and management of water, based on River basin management.

08.11.2005

Pia Frederiksen, NERI

6



— Integration in WFD's self understanding —

- of environmental objectives
- of all water resources
- of all water uses, functions and values
- of a wide range of measures, including pricing and economic and financial instruments, in a common management approach
- of stakeholders and the civil society in decision making
- of different decision-making levels

08.11.2005

Pia Frederiksen, NERI

7



— WFD: integrated planning method

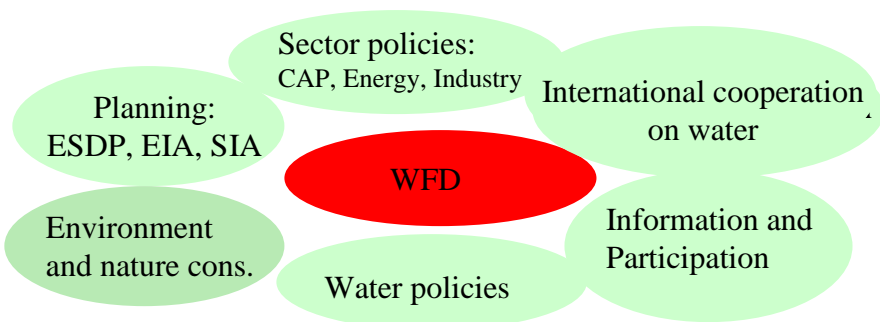
- Elements in River Basin Management Plan
 - General description of RBD: maps, reference conditions
 - Summary of significant pressures and impacts of human activity
 - Identification of protected areas
 - Maps of monitoring networks and results
 - Surface water: ecological and chemical status
 - groundwater: chemical and quantitative status
 - status of protected areas
 - Environmental objectives
 - Summary of economic analysis of water use
 - Summary of program of measures
 - Summary of public information and consultation

08.11.2005

Pia Frederiksen, NERI

8

Water management policy context



08.11.2005

Pia Frederiksen, NERI

9

• European policies related to functions of water:

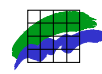
environmental objectives

- Fish water directive
- Water for drinking water production directive
- Shellfish water directive
- Bathing water directive
- Drinking water directive

08.11.2005

Pia Frederiksen, NERI

10



European water policies regulating drivers and pressures

Identification of pressures, programme of measures

Specific substances

- Dangerous substances and daughter directives
- Ground water directive

Sources of pollution

- Urban wastewater directive
- Nitrates directive
- Pesticides directive
- IPPC directive

08.11.2005

Pia Frederiksen, NERI

11



Other policies relevant for WFD

Policies relevant for identification of pressures and program of measures

- CAP policy
- TEN,
- Bioenergy directive,
- structural funds programmes, a.o.

Policies relevant for participation

- Environmental information directive
- Acces to information, participation and access to justice (decision)

Policies targeting other environmental issues:

- Habitats directive, Birds directive, EIA, SIA, ESDP, ICZM

08.11.2005

Pia Frederiksen, NERI

12



Policies designating areas

List of protected areas

- Drinking water protected areas
- Bathing waters
- Fresh waters needing protection in order to support fish life
- Shellfish waters
- Protection of bird life
- Natural habitats of wild flora and fauna
- Nutrient sensitive areas
- Areas for prevention of nitrate pollution

08.11.2005

Pia Frederiksen, NERI

13



Cross cuttings in legislation

Cross cuttings	Legal status	Management Plan	Public consult.	Design. Areas
WFD dir.				
Renewable en. dir.				
Habitat and birds dir				
ICZM recom.				
ESDPersp.				
Bathing water dir				
Fish water dir				
Drinking water dir				
Nitrate dir				
Urban waste water dir				
IPCC				

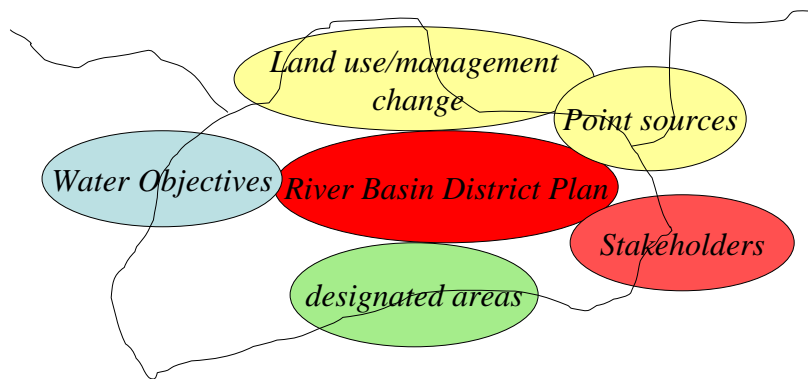
08.11.2005

Pia Frederiksen, NERI

14

Planning context

spatial fit and interplay



08.11.2005

Pia Frederiksen, NERI

15

Results from national consultations

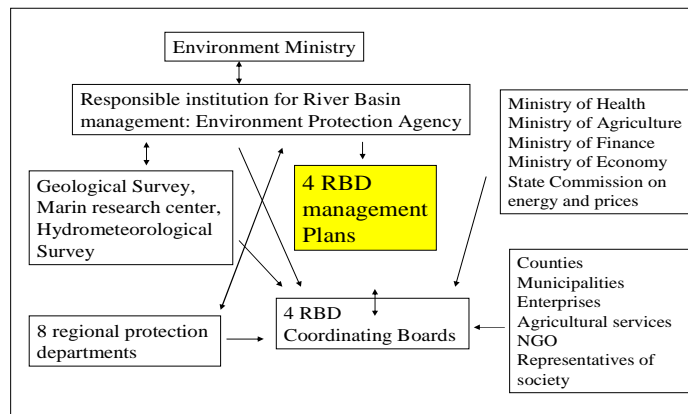
- Institutions to produce management plans do mostly not coincide territorially with river basins
- In some countries steps have been taken to secure interaction among relevant management issues

08.11.2005

Pia Frederiksen, NERI

16

Case Lithuania



08.11.2005

Pia Frederiksen, NERI

17

Case Denmark

Law on Environmental objectives:

- One law including both the Habitat and the Water framework directive have been implemented
- The new municipalities are obliged to draw up an action plan within 6 months after the acceptance of a RBMP

Amendments to planning Act

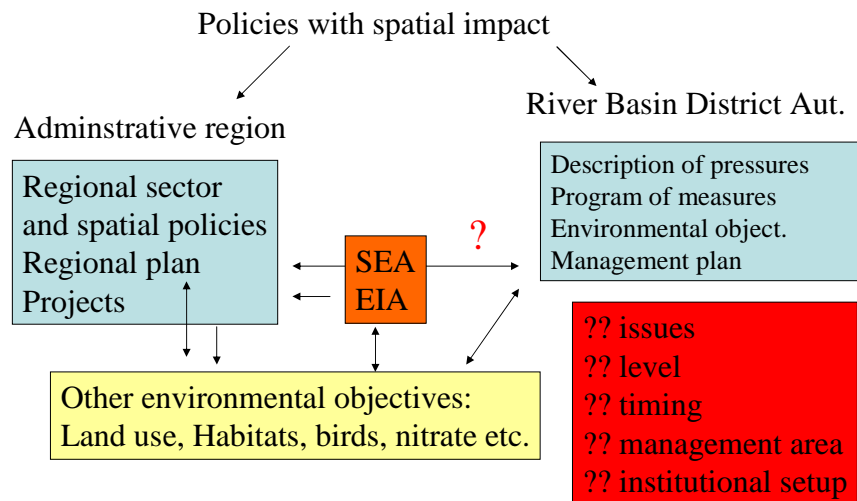
- Municipality planning shall be carried out within the framework given by the action plans related to water, Natura 2000, forests and other resource plans

08.11.2005

Pia Frederiksen, NERI

18

Relationships and challenges



08.11.2005

Pia Frederiksen, NERI

19



Conclusions



- A large number of EU policies interact with the WFD
- These can largely be categorised according to the pressures, environmental objectives, impacts and responses (DPSIR)
- The WFD claims to be - and is - an integrated approach to the management of water
- But... by emphasising some elements of integration others may suffer
- The physical planning procedures and institutions need to be considered seriously in the implementation of the WFD

08.11.2005

Pia Frederiksen, NERI

20